





16-0206-00

Komprimeter  
Compression Apparatus  
Appareil compressif  
Aparato de compresión



PERCY

16-1100-00

Amputationsretraktor  
Amputation Retractor  
Rétracteur pour amputation  
Retractor para amputación



**CHARRIERE**

**16-1250-00**

komplett mit 3 Sägeblättern  
complete with 3 saw blades  
complète avec 3 lames de scie  
completo con 3 hojas de sierra



**16-1250-03**

3 mm



**16-1250-05**

5 mm



**16-1250-07**

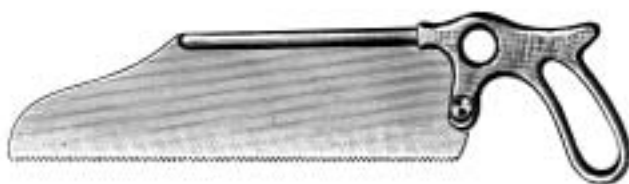
7 mm



**CHARRIERE**

**16-1230.30**

30 cm, 12"



**SATTERLEE**

**16-1235.31**

31 cm, 12 1/2"



**LANGENBECK**

**16-1677.23**

23 cm, 9"



16-1678.00

komplett mit 3 Bohrern  
complete with 3 drill points  
complète avec 3 vrilles  
completo con 3 brocas



16-1678.01

3 Bohrer, Set  
3 drill points, set  
3 vrilles, jeu  
3 brocas, juego



RADOLF

16-1679.13

13,5 cm, 5 1/4"



16-1680.00



16-1680.01

Fingerringsäge  
Finger ring saw  
Scie pour bagues  
Sierra para abrir anillos

**Handbohrapparate**  
**Bone Hand Drills**  
**Perforateurs à main**  
**Perforadores a mano**



16-7401.90

**STILLE**

16-7401.00

komplett  
 complete  
 complète  
 completo



16-7401.25

2,5 mm



16-7401.30

3,0 mm



16-7401.35

3,5 mm



16-7401.40

4,0 mm



16-7401.05

5,0 mm



16-7401.08

8,0 mm



16-7401.10

10,0 mm



16-7401.12

12,0 mm



16-7401.16

16,0 mm



16-7402.10

1,0 mm



16-7402.15

1,5 mm



16-7402.20

2,0 mm



16-7420.25

2,5 mm



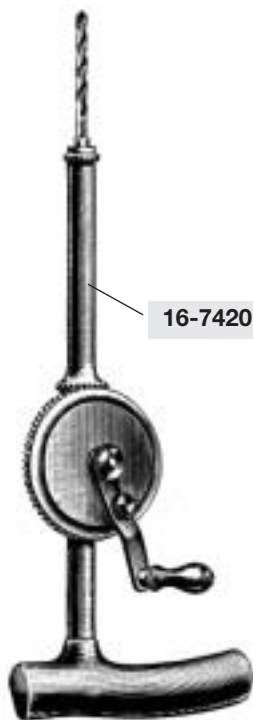
16-7420.30

3,0 mm



16-7420.35

3,5 mm



16-7420.90

**STILLE-SHERMANN**

16-7420.00

komplett  
 complete  
 complète  
 completo

24 cm, 9 1/2"



16-7410.90

MOORE

16-7410.00

24 cm, 9 1/2"

komplett  
 complete  
 complète  
 completo



16-7410.30

3 Bohrer, Set,  
 3 drill points, set  
 3 vrilles, jeu  
 3 brocas, juego



CUSHING

16-7431.14

14,0 mm



MC KENZIE

16-7433.00

13,0 mm



HUDSON

16-7430.00

27 cm, 10 3/4"

komplett  
 complete  
 complète  
 completo



16-7430.09

9,0 mm



16-7430.14

14,0 mm



16-7430.16

16,0 mm



16-7430.22

22,0 mm



16-7432.00



**KIRSCHNER**

**16-7440.00**



**16-7441.00**

komplett  
 complete  
 complète  
 completo



**KIRSCHNER**

**16-7450.00**



**16-7451.00**

komplett  
 complete  
 complète  
 completo

**Handbohrapparate**  
**Bone Hand Drills**  
**Perforateurs à main**  
**Perforadores a mano**

16



16-7500.92

Spannschlüssel  
 Key  
 Clef  
 Llave

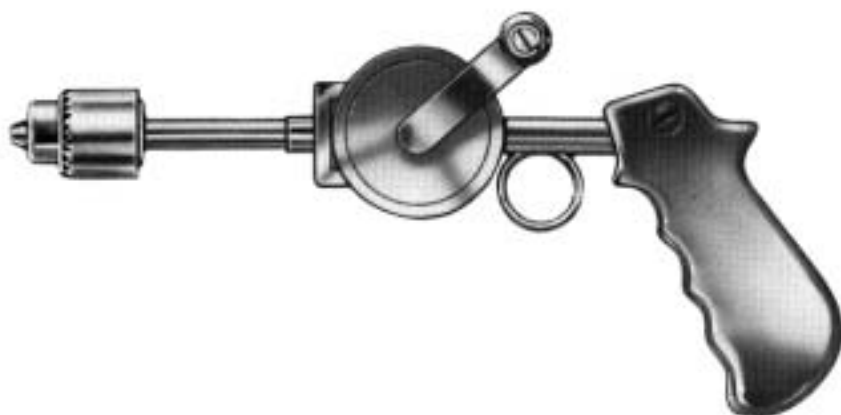
BUNNELL

16-7500.16



RALK

16-7510.20



16-7520.00



16-7521.00



16-7533.00



16-7531.00 110 V

16-7532.00 220 V



**Bohrer, Fräser, Trephinen**  
**Burrs, Drills, Trephines**  
**Mèches, fraises, trépan**  
**Taladros, fresas, trepinas**



16-7550.20	2,0 mm
16-7550.25	2,5 mm
16-7550.30	3,0 mm
16-7550.32	3,2 mm
16-7550.35	3,5 mm
16-7550.40	4,0 mm
16-7550.50	5,0 mm
16-7550.60	6,0 mm
16-7550.70	7,0 mm



16-7552.10	1,0 mm
16-7552.12	1,2 mm
16-7552.15	1,5 mm
16-7552.18	1,8 mm
16-7552.20	2,0 mm
16-7552.22	2,2 mm
16-7552.25	2,5 mm
16-7552.28	2,8 mm
16-7552.30	3,0 mm
16-7552.32	3,2 mm
16-7552.35	7,0 mm
16-7552.40	4,0 mm
16-7552.50	5,0 mm



16-7554.10	1,0 mm
16-7554.15	1,5 mm
16-7554.20	2,0 mm
16-7554.25	2,5 mm
16-7554.28	2,8 mm
16-7554.30	3,0 mm
16-7554.32	3,2 mm
16-7554.35	3,5 mm
16-7554.40	4,0 mm
16-7554.50	5,0 mm
16-7554.60	6,0 mm



16-7562.04	4,0 mm
16-7562.06	6,0 mm
16-7562.08	8,0 mm
16-7562.10	10,0 mm
16-7562.12	12,0 mm
16-7562.14	14,0 mm
16-7562.16	16,0 mm

**DOYEN**



16-7564.04	4,0 mm
16-7564.06	6,0 mm
16-7564.08	8,0 mm
16-7564.10	10,0 mm
16-7564.12	12,0 mm
16-7564.14	14,0 mm
16-7564.16	16,0 mm

**DOYEN**



16-7572.08	8,0 mm
16-7572.10	10,0 mm
16-7572.12	12,0 mm

**ALBEE**



**DOYEN**  
**16-7566.12**  
 12,0 mm



**16-7568.08** 8,0 mm  
**16-7568.10** 10,0 mm



**DOYEN**  
**16-7570.12** 12,0 mm  
**16-7570.15** 15,0 mm



**ALBEE**

16-7574.07

7,0 mm



**BORCHARDT**

16-7576.13

13,0 mm



**16-7577.25**

25,0 mm



**TOTI**

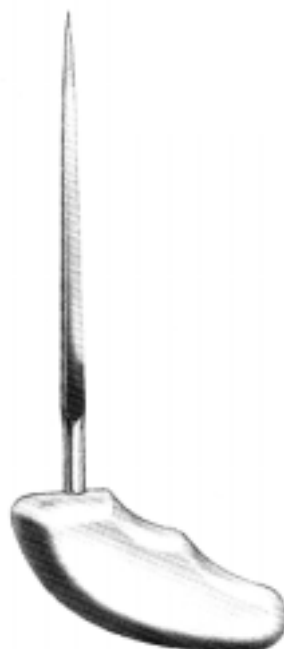
16-7578.08

8,0 mm



**16-7592.14**

14 cm, 5 1/2"



**PERTHES**

16-7595.21

21 cm, 8 1/4"

**Zubehör zum Handmotor**  
**Accessories for Bone Engine**  
**Accessoires pour moteur à main**  
**Accesorios para motor a mano**



16-7580.20	20 mm
16-7580.25	25 mm
16-7580.30	30 mm
16-7580.35	35 mm
16-7580.40	40 mm
16-7580.45	45 mm
16-7580.50	50 mm



16-7582.20	20 mm
16-7582.25	25 mm
16-7582.30	30 mm
16-7582.35	35 mm
16-7582.40	40 mm
16-7582.45	45 mm
16-7582.50	50 mm



16-7584.20	20 mm
16-7584.25	25 mm
16-7584.30	30 mm
16-7584.35	35 mm
16-7584.40	40 mm
16-7584.45	45 mm
16-7584.50	50 mm



16-7586.17	17 mm
16-7586.22	22 mm
16-7586.27	27 mm
16-7586.32	32 mm
16-7586.37	37 mm
16-7586.42	42 mm
16-7586.47	47 mm



16-7587.00



16-7588.00



16-7590.00

**Bohrdrähte**  
**Wire Drills**  
**Broches filiformes**  
**Taladros filiformes**



	60 mm	120 mm	140 mm	160 mm	310 mm
Ø 1,0 mm	16-7606.10	16-7612.10	16-7614.10	16-7616.10	16-7631.10
Ø 1,2 mm	16-7606.12	16-7612.12	16-7614.12	16-7616.12	16-7631.12
Ø 1,4 mm	16-7606.14	16-7612.14	16-7614.14	16-7616.14	16-7631.14
Ø 1,5 mm	16-7606.15	16-7612.15	16-7614.15	16-7616.15	16-7631.15
Ø 1,6 mm	16-7606.16	16-7612.16	16-7614.16	16-7616.16	16-7631.16
Ø 1,8 mm	16-7606.18	16-7612.18	16-7614.18	16-7616.18	16-7631.18
Ø 2,0 mm	16-7606.20	16-7612.20	16-7614.20	16-7616.20	16-7631.20
Ø 2,2 mm	16-7606.22	16-7612.22	16-7614.22	16-7616.22	16-7631.22
Ø 2,5 mm				16-7616.25	16-7631.25

**KIRSCHNER**



310 mm	
16-7632.10	Ø 1,0 mm
16-7632.12	Ø 1,2 mm
16-7632.15	Ø 1,5 mm
16-7632.16	Ø 1,6 mm
16-7632.18	Ø 1,8 mm
16-7632.20	Ø 2,0 mm
16-7632.22	Ø 2,2 mm
16-7632.25	Ø 2,5 mm

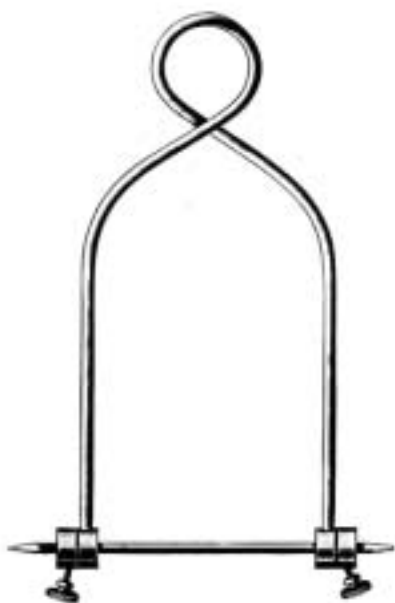
**KIRSCHNER**



16-7690.13	13 cm, 5"
16-7690.14	14 cm, 5 1/2"
16-7690.15	15 cm, 5 3/4"
16-7690.16	16 cm, 6 1/4"
16-7690.18	18 cm, 7"
16-7690.20	20 cm, 8"
16-7690.21	21 cm, 8 1/4"

**STEINMANN**

**Extensionsbügel**  
**Extension Bows**  
**Etriers à extension**  
**Estribos para extensión**



**BOEHLER**

16-7702.16 160 x 90 mm

16-7702.21 160 x 110 mm



**KIRSCHNER**

16-7712.09 95 x 70 mm

16-7712.10 105 x 105 mm

16-7712.12 120 x 120 mm

16-7712.15 155 x 155 mm

16-7712.20 200 x 155 mm



16-7714.18 180 x 100 mm

16-7714.27 270 x 160 mm



**KIRSCHNER**

16-7718.01 klein / small

16-7718.02 groß / big



16-7715.01



16-7716.02



16-7719.01



16-7719.02



16-7530.02	0,2 mm
16-7530.03	0,3 mm
16-7530.04	0,4 mm
16-7530.05	0,5 mm
16-7530.06	0,6 mm
16-7530.07	0,7 mm
16-7530.08	0,8 mm
16-7530.09	0,9 mm
16-7530.10	1,0 mm
16-7530.11	1,1 mm
16-7530.12	1,2 mm
16-7530.15	1,5 mm



**LOUTE**

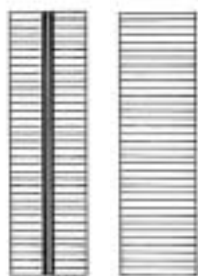
**16-7531.21**  
 21 cm, 8 1/4"



**16-7533.18**  
 18 cm, 7"



**16-7532.17**  
 17 cm, 6 3/4"



**16-7534.15**  
 15 cm, 5 3/4"



**16-7536.14**  
 14 cm, 5 1/2"





**16-7540.16**

16 cm, 6 1/4"



**16-7542.15**

15 cm, 5 3/4"



**16-7545.22**

22 cm, 8 1/2"



**16-7560.24** 2,4 mm

**16-7560.32** 3,2 mm

**16-7560.48** 4,8 mm

**16-7560.64** 6,4 mm



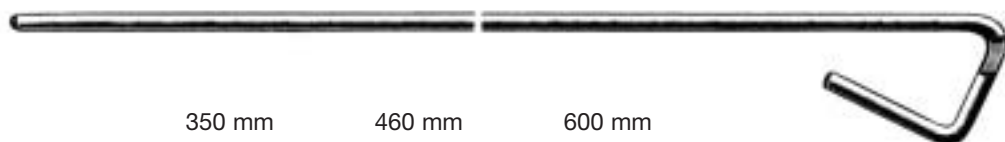
**16-7562.24** 2,4 mm

**16-7562.32** 3,2 mm

**16-7562.48** 4,8 mm

**16-7562.64** 6,4 mm

**Knochen Nagelung**  
**Bone Nailing**  
**Enclouage des os**  
**Enclavamiento de huesos**



	350 mm	460 mm	600 mm
Ø 2,5 mm	16-7981.25	16-7982.25	
Ø 3,0 mm	16-7981.30	16-7982.30	
Ø 3,5 mm	16-7981.35	16-7982.35	16-7983.35
Ø 4,0 mm	16-7981.40	16-7982.40	16-7983.40
Ø 5,0 mm	16-7981.50	16-7982.50	
Ø 6,0 mm			16-7983.60



**KUENTSCHER**  
**16-7971.26**  
 26 cm, 10 1/4"



**KUENTSCHER**  
**16-7973.35**  
 35 cm, 13 1/2"



**KUENTSCHER**  
**16-7986.21**  
 21 cm, 8 1/4"



**KUENTSCHER**  
**16-7988.21**  
 21 cm, 8 1/4"

16





**KUENTSCHER**  
**16-7990.00**  
 63 cm, 25"



**16-7990.01**  
 Fig.1



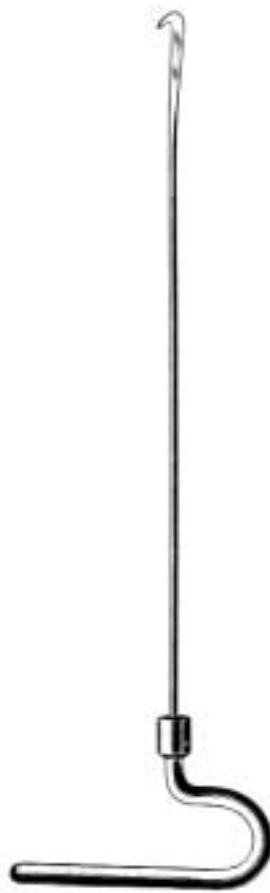
**16-7990.02**  
 Fig.2



**16-7990.03**  
 Fig.3



**16-7990.04**  
 Fig.4



<b>16-7996.29</b>	29 cm, 11 1/4"
<b>16-7996.37</b>	37 cm, 14 1/2"
<b>16-7996.42</b>	42 cm, 15"
<b>16-7996.49</b>	49 cm, 19 1/2"



**16-7998.30**  
 30 cm, 12"



**LLOYD**

16-7602.20

20 cm, 8"



**LANE**

16-7620.25

25 cm, 10"



**LANE**

16-7622.25

25 cm, 10"



**WILLIAMS**

16-7624.24

24 cm, 9 1/2"



16-7628.25 2,5 mm

16-7628.35 3,5 mm



**LANE**

16-7635.18

18 cm, 7"



**LANE**

16-7635.23

23 cm, 9"



**LANE**

16-7639.22

22 cm, 8 1/2"



16-7680.45 4,5 mm

16-7680.70 7,0 mm



16-7681.05

5,0 mm



16-7682.45 4,5 mm

16-7682.70 7,0 mm



16-7683.25 2,5 mm

16-7683.35 3,5 mm

16-7683.50 5,0 mm



16-7684.00

Osteosynthese  
Osteosynthesis  
Ostéosynthèse  
Osteosíntesis

---

16